



**MEDIC
THERAPEUTICS**

SHIATSU FOOT/LEG MASSAGER & HEATED OTTOMAN



User Manual

SAFETY PRECAUTIONS



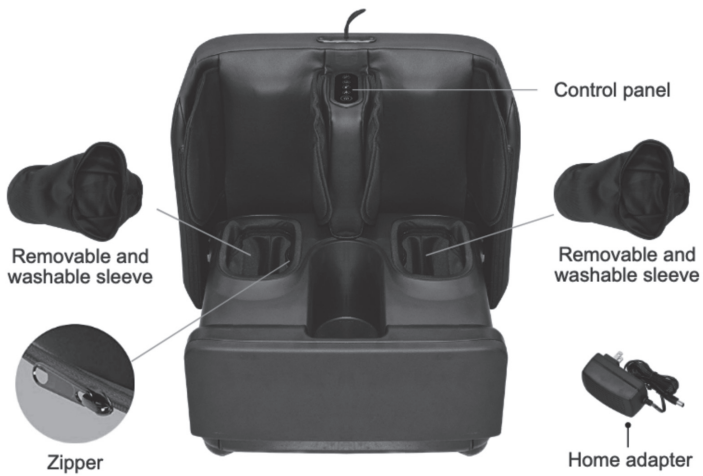
Please read the following instructions carefully before putting your massage device into use to ensure trouble-free operation and optimum efficiency. Please retain these operating instructions for further use!

- The massage device conforms to recognized technical principles and the latest safety regulations.
- Do not wet, do not use pins, never remove cover.
- This item is NOT A TOY. Close supervision is necessary when this appliance is used by, on, or near children or disabled persons.
- This appliance should never be left unattended when plugged in.
- Any possible repairs may only be carried out by authorized expert staff. Improper use and unauthorized repairs are not permitted for safety reasons and lead to loss of warranty.
- Never touch the power plug with wet hands.
- Please avoid contact of the device with water, high temperatures and direct sunlight.
- Do not use any damaged cables, plugs or loose sockets.
- Never operate under blankets where the air opening may be blocked.
- If plugs or cords are damaged, they must be replaced by the manufacturer, a service representative or by qualified personnel.
- In case of malfunction, disconnect immediately from the mains.
- Do not use if you have skin disorders, open wounds, or swollen or inflamed areas.
- Misuse or incorrect use excludes any liability for damage.
- Do not use while you sleep.
- In order to avoid excessively stimulating the muscles and nerves, the recommended massage time should not be exceeded 15 minutes at a time.
- The packaging material supplied should not be used as a toy.
- Consult a doctor prior to use if you are one of:
 - Those who are using electronic medical instrument imbedded in the body, such as cardiac, pacemaker etc.
 - Those who are being treated by doctors, especially those who feel discomfort.
 - Those who are malignant tumor patients, heart disease patients, or acute patients.
 - Women who are pregnant or menstruating.
 - Those with osteoporosis or a fractured spine.
 - Those with skin disease or those whose skin is impaired.
- Failure to observe the above instructions may constitute misuse of the product and can cause serious injury or burns.

PRODUCT FEATURES

- 2-in-1 foot & leg massager or heated ottoman seat
- Shiatsu, pressure and heating massage for lower leg and feet
- 2 massage modes
- 3 levels of pressure intensity
- Optional heating feature
- Detachable and washable foot sleeves

PRODUCT OVERVIEW

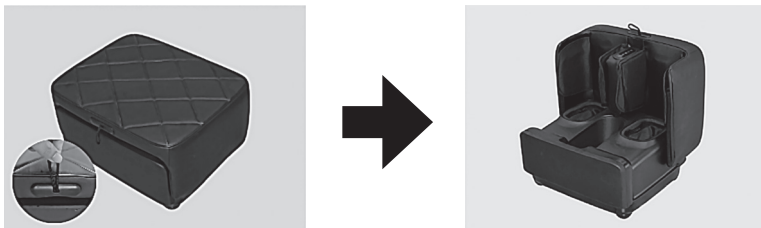


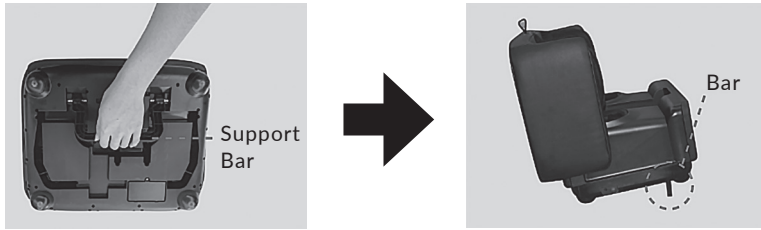
SET-UP & OPERATION

1. Please place the product on a flat surface floor.
2. Connect the adapter cable to the corresponding port on the foot massager.



3. Plug the home adapter into electrical outlet (the adapter is safe to use with both 110-120V & 220-240V).
4. Pull up the handle on the ottoman, open the product and use it as a foot/leg massager.





5. Adjust the support bar at the bottom of the product to your desired/appropriate massage angle based on your seated position.
6. Turn on the massage device through operating control panel.
 - This device will switch off automatically after 15 minutes.
 - Do not setup or use the device in a bathroom or similarly wet / damp area.

CONTROL PANEL OVERVIEW

Leg Mode Button

Press to Choose the mode between M1-M2 or turn off.
 M1: Turn on pressure and vibration function. Three indicators light up.
 M2: Turn on pressure function only. Two blue indicators light up.

Pressure Intensity Button

Press to choose Low/Medium/High Intensity of PRESSURE or turn off.
 LOW--1 indicator light up.
 Medium--2 indicators light up.
 High--3 indicators light up.



On/Off Button

Press to turn on /off the device.

Foot Shiatsu Button

Press to turn on or off Shiatsu massage on feet.

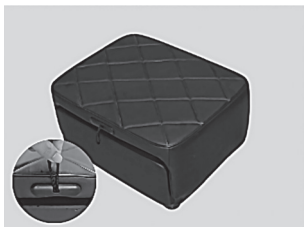
Heat Button

Press to turn on/off HEAT function on foot area.

Note:

Press ON/OFF button to turn on the massager and activate the default setting, the device works on MODE 1. Foot Shiatsu turn on, Foot heat function turn off.

SUGGESTED USE



Warm Ottoman Seat Massager



Foot/Leg Massager

AFTER USE

- Turn off the power button on the control panel.
- After pressure is released, close the product as a heated ottoman seat
- Turn on the heating function on the top of the ottoman to get a comfortable warm seat.

IMPORTANT INFORMATION

- For your own safety we equip the massager with a protection against over-heating. Heat is created in the motors when placed under great stress and excessive pressure. Before this could create any risk and after a runtime of 15 minutes, the massager will switch off automatically and will only allow switching on again after an appropriate downtime.
- Likewise, you should allow your body some rest periods. To avoid straining your muscles too much, we recommend to not exceed a continuous massage of 30 Minutes one time and not exceed 3 times one day.

CLEANING & MAINTENANCE

Foot/Leg Massager & Ottoman with Heat:

- Always unplug the unit before cleaning it. Never touch the power plug with wet hands.
- Before cleaning, allow unit to cool.
- Wipe the unit with a soft, dry cloth. Do not use cloths containing any kind of chemical or alcohol and solvent liquids.
- Never submerge any part of the unit in liquid.
- If the unit is particularly dirty, use the following instructions:
 1. Dampen a cloth in water or a 3%-5% mild detergent solution.
 2. Wipe the dirty areas with the wet cloth.
 3. Wipe the areas with a soft, dry cloth.
 4. Wait for the unit to become fully dry before use.
- Do not use corrosive cleaning agents like benzene or thinner to clean the Foot Massager, otherwise the color of the upholstery will fade or the Foot Massager will crack or erode.
- Do not iron the upholstery. When the product is wet, allow the product to air dry thoroughly before use.

Removable & Washable Cover:

- Detach the cover and machine wash or wash by hand. Allow to air dry.

Maintenance:

- Place massager in a safe, dry, and cool place. Avoid contact with sharp edges or pointed objects which might cut or puncture the surface.
- Keep away from children at all times.

TROUBLESHOOTING

Fault	Solutions
There is a clattering noise in the movement	This is perfectly normal caused by the working of product. It is normal status.
The massage device switches off suddenly	Device may have been in use for 15minutes. Auto-shut off function activated. Continue using by pressing the 'power' button after resting the unit for 15minutes.
The massage device fails to start	Check if device has been used for more than 15mins. If so, let device rest for 15mins before continuing. Device may require longer time to cool in warmer environments.
	Check if adapter is plugged into socket.
	Check if adapter output is connected to device power inlet.

PRODUCT SPECIFICATIONS

- Size of product itself: 19.3 x 15.7x 11.8 inches (Closed)
- Net weight of product itself: 9.1KGS
- Single package size: 53.5X31.5X43.5CM
- Net weight of product including package: 10.5KGS
- Materials: PU
- Voltage:
 - Input: AC 100-240V ~50/60Hz
 - Output: 24VDC 1500MA
- Nominal Power: max. 36Watt
- Automatic Timer: 15 minutes

LIMITED LIFETIME WARRANTY

Your Medic Therapeutics Product is backed by a limited lifetime manufacturer's warranty. Medic Therapeutics will repair or replace your device at any time should it fail due to a defect in material or workmanship, subject to the certain limitations.

This limited warranty does not cover any damage that results from unauthorized or improper use, service, or repair. Further, it does not cover damage caused by accident, impact, negligence, or normal wear and tear. Should you discover your Medic Therapeutics Product is not functioning properly, please send your device to our repair center for evaluation. If your product cannot be repaired or serviced, we will reserve the right to change it for a similar or newer model.

Please note that a flat rate of \$100.00 will be charged to cover a service evaluation fee and return shipping of your device. All warranty claims must be accompanied by a copy of your proof of purchase from an authorized retailer. Please send your device, proof of purchase, and a check or money order in the amount of \$100.00 made out to Medic Therapeutics to:

Address:

Medic Therapeutics Service Center
3069 Taft Street
Hollywood, FL 33021

Contact:

warranty@medictherapeutics.com



**MEDIC
THERAPEUTICS**