

ACTIVA

ACTIVA LUMINOUS QUAD DRONE

USER MANUAL

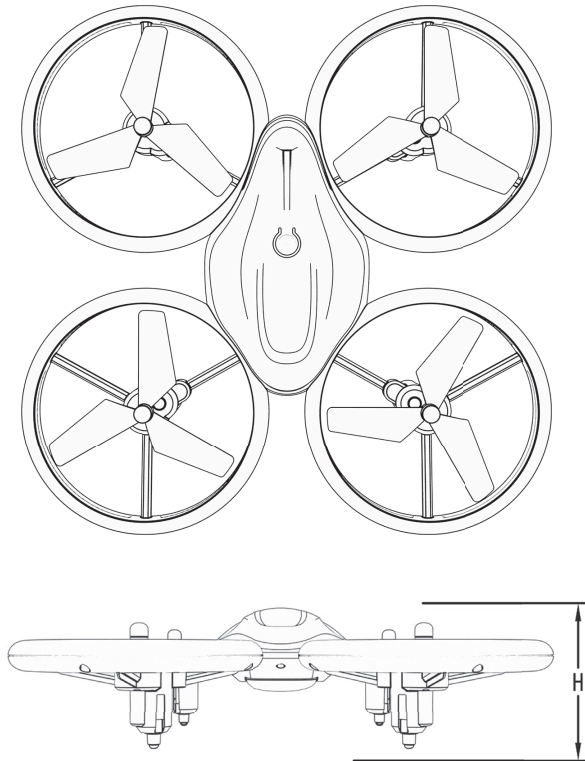
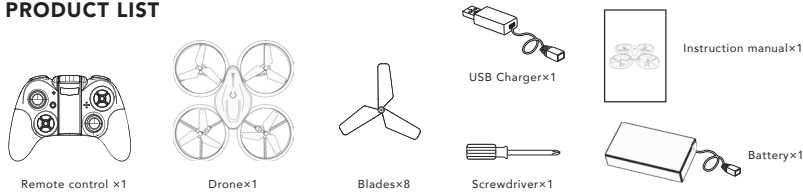


**PLEASE READ THIS MANUAL CAREFULLY BEFORE OPERATING THIS PRODUCT AND
KEEP FOR FUTURE REFERENCE.**

WARNING

Mishandling due to failure to follow these instructions may result in damage or injury.

PRODUCT LIST



PRODUCT SPECIFICATIONS

Diagonal Length:	8" Inches (205mm)
Height:	2" Inches (45mm)
Battery Specification:	3.7V Li-Battery
Fight time:	6-8mins

IMPORTANT

This aircraft is not a toy. Use the device correctly as per instructions and safety guidelines in this manual. Dismantling, modifying or improper use of the aircraft is dangerous and can result in injury or damage.

This product is intended for use by age 14 years or older. Please ensure the product is operated under safe environment.

It is recommended that you seek the assistance of an experienced pilot before attempting to fly this aircraft for the first time. The advice of a local expert is the best way to properly assemble, set up, and initially fly your model. Any damage or dissatisfaction as a result of accidents or modifications are not covered by any warranty and cannot be returned for repair or replacement.

SAFETY & PRECAUTIONS

Always avoid crowds when operating. The pilot of the aircraft assumes all responsibilities and liabilities related to accidents, failures, damage or injury, and radio interference during flight. Use with care and caution.

This product is suitable for indoor and outdoor (the wind grade should not be on more than 4) use. Always choose an obstacle-free location and avoid from crowds and pets at all times. Do not operate near any heat source, wires, or electronic power sources in order avoid damage by collision landing, entanglements that can lead to fire, electric shock or cause loss of life and property.

Moisture Prevention

This is an electrical device so always keep the model and associated equipment away from moisture and other contaminants. The introduction or exposure to water or moisture in any form can cause the aircraft to malfunction or crash.

WARNING

Safety Information

Do not disassemble, modify, upgrade or repair the product. Use only the spare parts as provided to maintain the integrity and safety of the craft's structure.

Safety Note for Remote Control Batteries

Make sure the batteries are installed based on polarity indicated in the case and do not mix batteries of different chemistry/specifications. Always remove the batteries if unused over a

prolonged period avoid potential leakage which may damage the transmitter. Dispose depleted batteries according to local laws and ordinances, do not dispose improperly.

Safety Note on Li-Polymer- Batteries

Li-Polymer batteries poses higher operational risks compared to other battery chemistry so it is imperative to follow usage instructions. Manufacturer and dealer assume no liability for accidental damages caused by improper use.

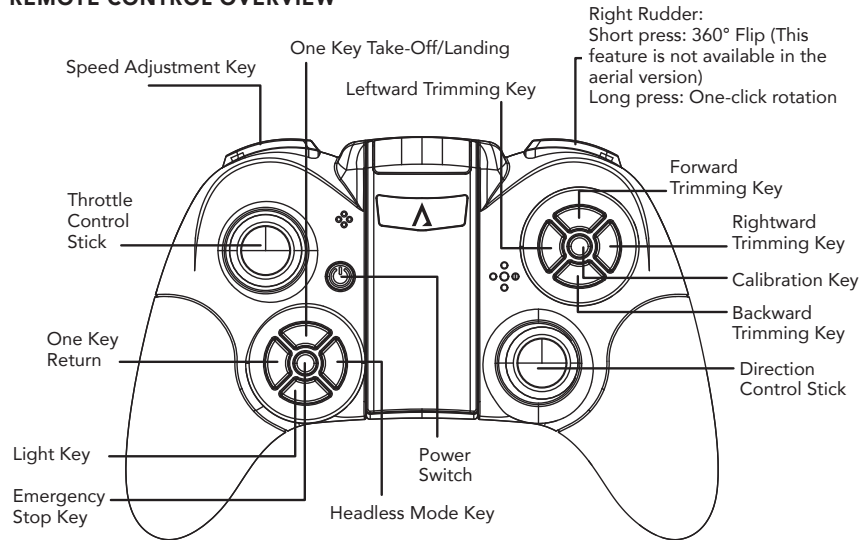
Only use the factory supplied unit to avoid potential fire and explosion. Do not crush, disassemble, burn, and reverse polarity. Avoid contact with metallic materials and never puncture the batteries to avoid fire hazards. Battery charging must be done under supervision at all times and in a location out of reach by children.

If the battery is deteriorated after use, it is strictly prohibited to charge or the battery to expand, deform, explode, or even result in fire hazards. Dispose of depleted batteries according to local laws and ordinances. Do not dispose improperly.

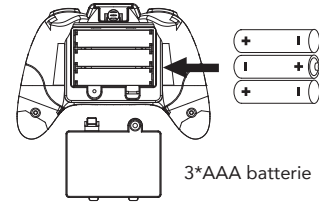
Climate Safety

The aircraft is made of various forms of plastic. Plastic is susceptible to damage or deformation due to extreme temperature. Always store the model in a climate-controlled, dry area. Never store near a heat source such as an oven or heater.

REMOTE CONTROL OVERVIEW



REMOTE CONTROL BATTERY INSTALLATION



1. Use the screwdriver to unsecure the battery cover and open it.
2. Install 3 AAA batteries.
3. Close the battery cover and secure by using the screwdriver.

AIRCRAFT BATTERY CHARGING

	<p>Securely insert the USB charger into the battery power port (smaller end).</p>
	<p>Charging time: Approximately 100 minutes. When complete, disconnect the USB charger from the port to prolong charger life.</p>

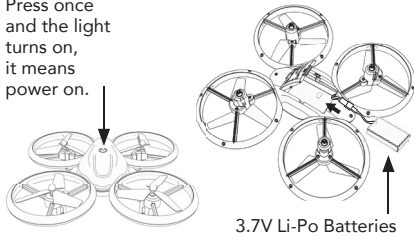
LED Indicator USB

Lights On: Charging
Lights Off: Charge Complete

For safety concerns, battery charging must be done under adult supervision at all times.

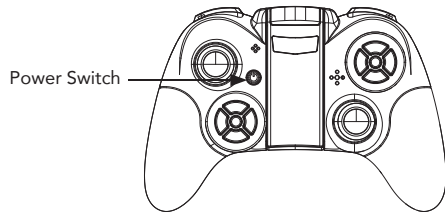
PAIRING DEVICES

Press once and the light turns on, it means power on.



Step 1

Place the device on a flat surface and insert the battery into the craft. Do not move until the blinking LED light switches from fast to slow. Only when the light is slow-flashing can the control be connected with drone.

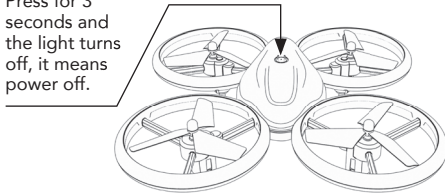


Step 2

Turn on the remote control and push the throttle stick to the top, then the bottom. When the drone's light stops flashing, they have been successfully connected.

Press for 3 seconds to power off. The indicator light will turn off when the device is successfully powered off.

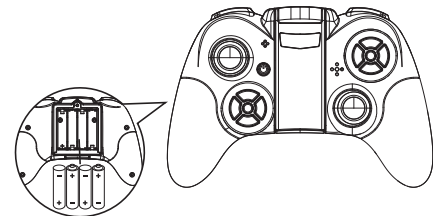
Press for 3 seconds and the light turns off, it means power off.



Step 3

Press Power Switch for 3 seconds and the light will turn off, this indicates the drone has powered off.

Warning: Failure to remove the battery when the device is not in use for an extended period may result in damage due to leakage and may become a fire hazard.



Step 4

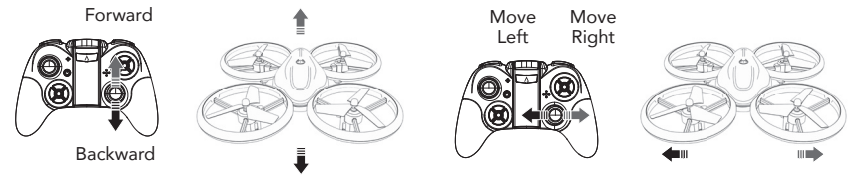
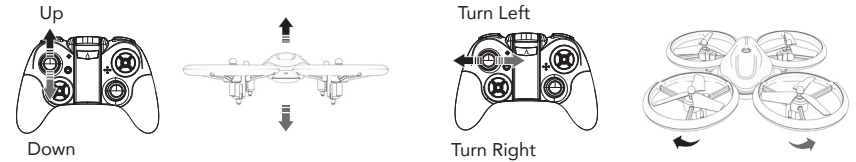
Turn off the remote control. If not in use for an extended period of time, remove the batteries.

Warning: If batteries are left in the transmitter, leakage could occur resulting in damage and potential fire hazard.

FLIGHT ADJUSTMENTS AND SETTINGS

Read and follow all instructions prior to first use.

1. Place the drone in a clear open field and point the tail of drone to yourself.
2. Practice operating the remote control and all functions prior to first flight.

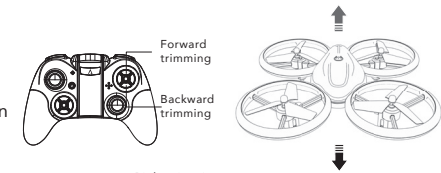


Trim Adjustment

Slowly raise the throttle control stick to take off and if it moves to a different orientation, use the Trim Button to correct.

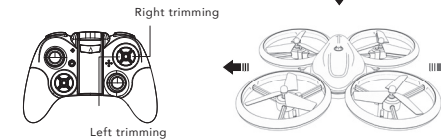
Forward and Backward Trimming

1. When the aircraft is starting to take off and it drifts forward/backward, adjust the Trim button in desired direction until balanced.



Left and Right Trimming

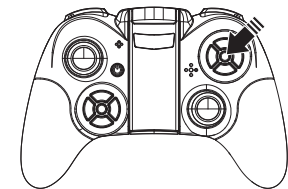
2. When the aircraft is starting to take off and it drifts left/right, adjust Trim button in desired direction until balanced.



Recalibration

If the trim buttons do not correct a flight issue, place the drone on a flat surface and recalibrate as follows.

Simultaneously, press both control keys to the lower left or to the lower right for 4 seconds (pic) - the drone light will rapidly flash. When successfully recalibrated, the light will stop flashing.



Headless Mode Instructions

When synching, the antenna of the remote control must be aligned with the tail of the drone. In normal flight, when pressing headless button, a beep and flashing guide light signifies headless mode. Press this button again to exit headless mode.

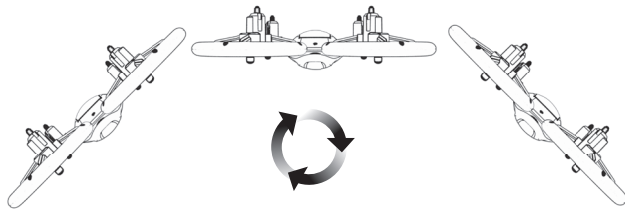
One Key Return

When the drone flies at a distance, the one key return button can recall the aircraft. Following device connection, the antenna of the transmitter must be aligned with the tail of the craft in order to takeoff. Press the one key return button to enter return mode, the light will flash. Press the button again to exit return mode. When returning, the forward and backward movement of right lever can interrupt this function.

High and Low Speed Switching

During flight, the flight speed can be adjusted by pressing this button while in any direction. The craft's default speed is low. Press this button once to switch to medium speed, the transmitter will beep twice. Press the button again to switch to high speed, the transmitter will beep three times. Press again to return to low speed.

360° Flip



Once familiar with basic operation, the aircraft can be flown to a height of more than 3 meters, and perform 360° Flip. To invert the craft, turn on the rear right side of the transmitter, then push the right rudder (in any direction) to achieve a 360 degree flip.

OPERATION OF AUTOMATIC FUNCTIONS

Start the Drone

Method 1: Press One Key Takeoff Button once and the propeller will start spinning and the drone will fly up.

Method 2: Simultaneously push the left throttle control stick to the bottom left corner and the right direction control stick to the bottom right corner for approximately 1 second and the propellers will spin slowly.

Altitude Hover Function

Push the left throttle control stick upwards, then downwards and release. The craft will maintain that height when released.

Turn Off the Drone

Method 1: Long press the emergency stop button, the propeller will stop working, locking the craft.

Method 2: Push the left throttle control stick down for 3 seconds, the blade will stop spinning.

One Key Take Off

Turn on drone, press the One Key Start the drone will propel upwards, and can be controlled to go towards any desired direction once it is flying.

One Key Landing

When flying, press the One Key Landing the drone will descend, and can be controlled to land in a desired location.

Emergency Stop

When the aircraft collides during the flight and cannot be controlled, the emergency stop button can be pressed and the aircraft will descend

FAQ FOR THE DRONE

SITUATION	THE REASON	SOLUTION
1. Receiver LED blinks continuously for more than 4 seconds once turned on with or no response to control input .	Unable pair with the transmitter.	Repeat pairing between controller and receiver
2. No response after battery is connected to aircraft.	1. Check power supply of transmitter and receiver. 2. Poor contact on battery terminals. 3. Check if the power switch has been turned on.	1. Turn on transmitter and ensure aircraft battery is inserted properly. 2. Use fully charged batteries. 3. Re-insert the battery and ensure secure contact between battery contacts. 4. Switch to the ON position.
3. Motor does not respond to throttle stick, receiver LED flashes.	Aircraft battery depleted.	Fully charge the battery or replace with a fully charged battery.
4. Main blade spins but unable to take off.	1. Blade deformation 2. Aircraft battery depleted.	1. Replace main blades. 2. Charge or replace with a fully charged battery.
5. Strong vibration of aircraft.	Blade deformation.	Replace the blade.
6. Aircraft rotates after trimming or different speeds between left /right blades	1. Damaged blades. 2. Damaged motor.	1. Replace blade. 2. Replace motor.
7. Aircraft drifts backward or forward	Gyroscope not at the midpoint.	Switch aircraft off and on.
8. Aircraft fails to take off after a crash or collision.	1. Motor has fallen out. 2. Gears are loose.	1. Install the motor again. 2. Tighten the gears.

LIMITED LIFETIME WARRANTY

Your Activa Luminous Quad Drone is backed by a limited lifetime manufacturer's warranty. Activa will repair or replace your device at any time should it fail due to a defect in material or workmanship, subject to the certain limitations.

This limited warranty does not cover any damage that results from unauthorized or improper use, service, or repair. Further, it does not cover damage caused by accident, impact, negligence, or normal wear and tear. Should you discover your Activa Luminous Quad Drone is not functioning properly, please send your device to our repair center for evaluation. If your product cannot be repaired or serviced, we will reserve the right to change it for a similar or newer model.

Please note that a flat rate of \$30.00 will be charged to cover a service evaluation fee and return shipping of your device. All warranty claims must be accompanied by a copy of your proof of purchase from an authorized retailer. Please send your device, proof of purchase, and a check or money order in the amount of \$30.00 made out to Activa to:

Address:

Activa Service Center
3069 Taft Street
Hollywood, FL 33021

Contact:

warranty@activaofficial.com

ACTIVA