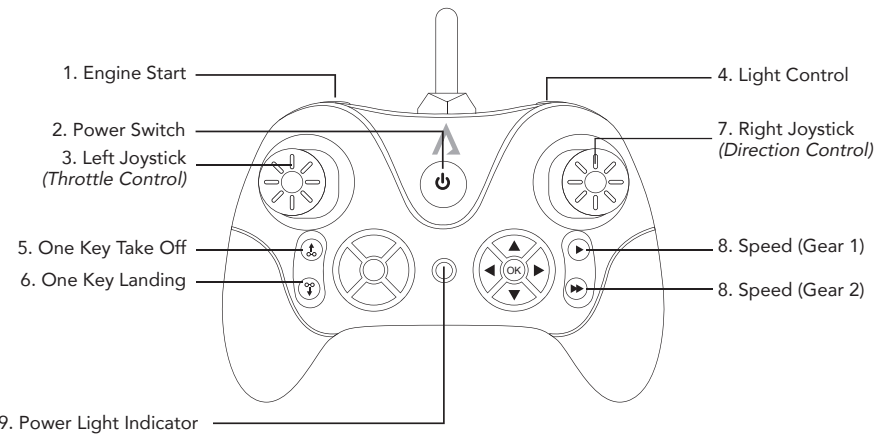


ACTIVA

3.5CH HELICOPTER

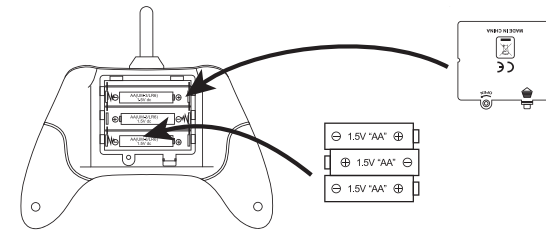
USER MANUAL

Read the instructions carefully prior to use and retain the manual for future reference.



REMOTE CONTROL BATTERY INSTRUCTIONS:

Remove battery cover and install 3 AA batteries according to polarity indications.
NOTE: For optimum performance, be sure to use the same type of batteries and avoid using a combination of old and new batteries.



CHARGING THE HELICOPTER'S LITHIUM BATTERY:

The Activa 3.5CH Helicopter is equipped with a rechargeable lithium battery.
1. Switch off power.
2. Connect charging cable to the charge port on the helicopter and the plug into a power outlet.
3. The LED light will illuminate red while charging; once fully charged, the LED light will shut off.
Do not charge over the 100-110 minute charging limit.

WARNINGS:

- To avoid damage or explosion, do not use or leave the battery near a heat source such as fire or heater.
- Do not immerse the battery in water or any liquid and always store in a cool dry environment.
- Only use the battery charge specifically for that purpose.
- Do not disassemble the battery.
- Never leave the battery unattended while charging.

NOTICE:

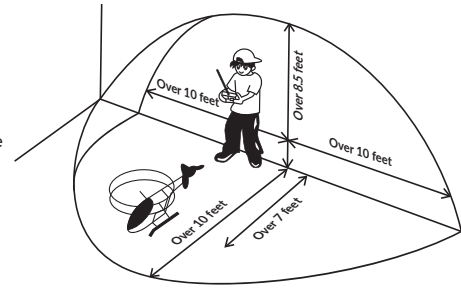
When you are tired of playing, please turn off the power switch on the chopper and on the controller to extend battery's usage time.

FLIGHT INFORMATION AND INSTRUCTION:

- Sunny, wind-free environments are optimal for flying.
- Do not fly in extreme temperatures.
Do not fly in temperature above 113 degrees Fahrenheit/45 degrees Celsius, or below 50 degrees Fahrenheit/10 degrees Celsius.
Flying in extreme heat and/or cold will affect performance and may damage the model.
 - Do not fly in strong wind.
Wind conditions will limit or disrupt the flying control.
In very windy conditions, your helicopter may become lost and/ or damaged.
 - Select a large, wide-open area that's free from obstruction, animals or people for flying.

FLIGHT PREPARATION:

- Place helicopter on the ground.
- With the tail pointed towards the user, be sure the helicopter is at least 7 feet away.
- Ensure the helicopter is far away from any crowds, animals or other obstructions such as trees.
- Fully extend the remote control antenna and make sure the joystick is positioned appropriately so that the helicopter is in a neutral position. Switch on the remote control and make sure that the helicopter's power is also switched on. Then, press the engine start button and begin flying/maneuvering the helicopter.



NOTE: When the remote's indicator light flashes- indicating that the battery power is low -change the batteries.

CONTROL INSTRUCTIONS:

Ascending:

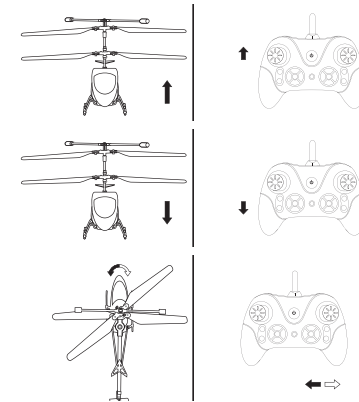
As the left joystick (throttle stick) is pushed upwards, the main rotor blade speed will increase and the helicopter will ascend.

Descending:

When left joystick (throttle stick) is pushed downwards, the rotor blade will decrease in speed and the helicopter will begin to descend.

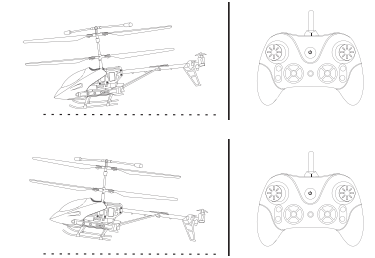
Steering:

- When the right joystick (rudder stick) is moved left, the nose of the helicopter will move to the left.
- When the right joystick (rudder stick) is moved right, the nose of the helicopter will move right.



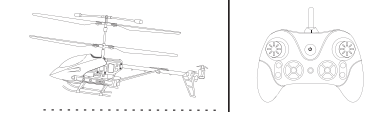
Forward:

When the right control lever (steering rudder) is moved upwards, the nose will incline downwards and the helicopter moves forward.



Backward:

When the right control lever (steering rudder) is moved downwards, the nose inclines upwards and the helicopter moves backwards.



Automatic Take Off & Landing:

Press the top one key take off button and the helicopter will automatically ascend into flight/take off.
Press the bottom one key landing button and the helicopter will automatically descend/land.

Speed:

Press the top speed button to set the helicopter to Speed Gear 1.
Press the bottom speed button to set the helicopter to Speed Gear 2.

Light Control:

Press the light control button to activate the helicopter's colorful LED lights.

Notes:

- The control distance will lessen when battery levels are low.
- When not fully charged the helicopter, the helicopter will have difficulty ascending.
- If the helicopter is damaged, contact manufacturer for repair information. **If the rotor becomes damaged or broken, do not fly as flying can lead to serious injury.
- Remove all batteries if not in use over an extended period of time.
- Never drop the helicopter from a high position or intentionally crash the device as serious damage or injury can occur.
- As this product contains many kinds of alloy (metal) parts, always pay close attention while operating.

TROUBLE SHOOTING:

Problems	Causes	Solutions
Remote Control doesn't work.	Remote control is switched off.	Turn on the power.
	Batteries inserted incorrectly.	Confirm batteries are correctly inserted.
	Lack of battery power.	Replace batteries.
Cannot Control Helicopter	Remote Control is off.	Turn on the remote control power.
	The helicopter's power is not switched on.	Turn on the helicopter.
	Flying in strong weather conditions.	Strong wind or weather is interfering with signal, discontinue use.
Helicopter Does Not Ascend	Main rotor blades are rotating too slow.	Pull the Throttle Stick upwards.
	Helicopter battery is not fully charged.	Fully charge the battery.
Helicopter Lands Too Quickly	You lose the throttle stick or push it down too fast.	Slowly push the throttle downwards until the helicopter lands smoothly.

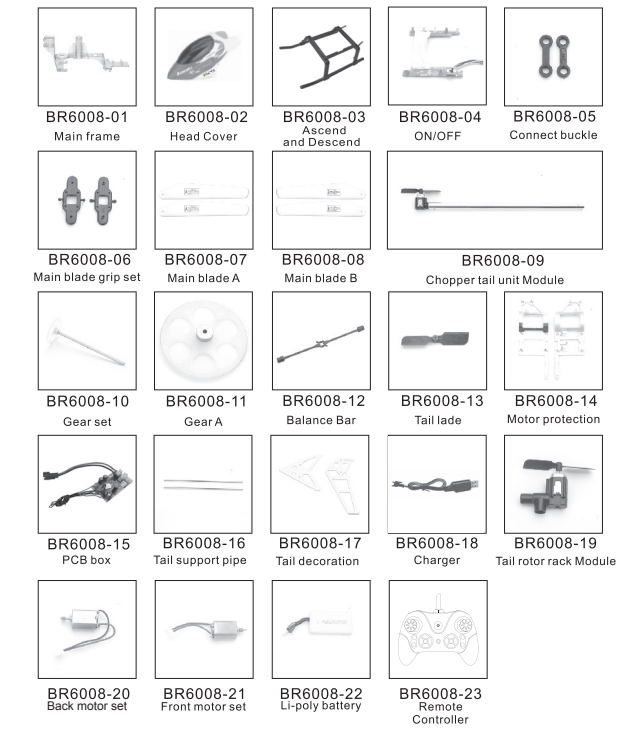
Warning:

- Be sure to take safety measures while operating.
- If new to operating a remote control device, it is advised to practice with an experienced user. Manufacturer and dealer are not responsible for the any inexperience or misuse of the device.
- Debugging and flight should be carried out in strict accordance with the manual. Always make sure to keep hands, face and body away from the revolving/moving parts.
- Be sure to fly the helicopter in a safe indoor environment or in a windless outdoor place. Keep the moving parts away from the other people or objects.
- A Lithium battery is included with this helicopter. Users are required to obey the operating regulation of the lithium battery, otherwise it may cause burns, explosion or other accidents.
- Only charge the device with the included charging equipment.
- Always remove the charging cable from the device and unplug from the power outlet.
- Never place the lithium battery in the direct sunlight or near fire. Never throw the battery into fire. Be sure to keep the battery in the dry environment.
- Never transport the battery and metal objects together.
- Never disassemble the battery.
- Never touch the charge or the power adapter with wet hands.
- While flying, keep device away from other electrical equipment, magnetic objects or radio devices to avoid accident caused by interference and affection with each other.
- When battery power indicator light is less than three cells, stop flying and replace batteries.
- Follow all guidelines for safe usage of a lithium battery.
- Charging the lithium battery may cause fire, personal injury and property loss. Users should be aware of the existence of such a risk. Manufacturer, dealers and retailers of the Activa 3.5CH Helicopter are not responsible for accidents resulting in use. Carefully read the battery instructions prior to use.
- Keep the battery away from children and pets. Children under the age of 18 should always be under the supervision of an adult while using the device. Not suitable for children under the age of 14.

Product Specs

Product size:	42*9*18cm
Body weight (g):	219 grams
Fan blade diameter (cm):	34CM
Body battery capacity:	3.7V, 1300 MAH with certificate
Remote control battery capacity:	3*AA dry battery
Charging time:	120mins
Flight time:	Above 10 minutes
Delivery accessories:	tail wind blade x1, screwdriver x1, USB x1, manual x1

Product Parts and Components



Limited Lifetime Warranty

Your Activa 3.5CH Helicopter is backed by a limited lifetime manufacturer's warranty. Activa will repair or replace your device at any time should it fail due to a defect in material or workmanship, subject to the certain limitations.

This limited warranty does not cover any damage that results from unauthorized or improper use, service, or repair. Further, it does not cover damage caused by accident, impact, negligence, or normal wear and tear. Should you discover your Activa 3.5CH Helicopter is not functioning properly, please send your device to our repair center for evaluation. If your product cannot be repaired or serviced, we will reserve the right to change it for a similar or newer model.

Please note that a flat rate of \$30.00 will be charged to cover a service evaluation fee and return shipping of your device. All warranty claims must be accompanied by a copy of your proof of purchase from an authorized retailer. Please send your device, proof of purchase, and a check or money order in the amount of \$30.00 made out to Activa to:

Address:
Activa Service Center
3069 Taft Street
Hollywood, FL 33021

Contact:
warranty@activaofficial.com