


KARMA BEAUTY
I AM. I DO. I LOVE.

Warranty

All of our styling tools come with a 30 day Manufacturer's Warranty. Register today for a free Lifetime Warranty at www.karmahairbeauty.com/register-your-device/ must be completed within 14 days of purchase.



Scan here to register your product.

How to Get Your Replacement Tool

If you should experience a problem with your registered Karma Beauty device simply visit www.karmahairbeauty.com for instructions on how to replace your device. The device must be well packed and received by us within 14 days of filing your claim. After our Customer Service Department inspects the device we will ship a new device back to you within 2 business days.

Shipping & Handling Fees

Exchanges are subject to a minor shipping & handling fee* after 30 days from purchase. If the issue arises within the first 30 days of purchase there are no shipping & handling fees unless the problem is determined to be caused by something other than a manufacturer's defect.

MAIL WARRANTY CLAIMS TO:

Karma Beauty
3935 Pembroke Road, Hollywood, FL 33021
Customer Service 1-888-316-0532
cs@karmahairbeauty.com

*Shipping & handling fee varies by product.
For a complete list of fees please visit www.karmahairbeauty.com

Warnings & Maintenance

WARNINGS:

- ⚠ **KEEP OUT OF REACH OF CHILDREN.** Children under the age of 14 should not use heated styling tools without adult supervision. **Children should not be allowed near the device until it has been unplugged and is completely cooled off.**
- ⚠ **KEEP AWAY FROM WATER.** Do not place device anywhere near water when it is plugged in due to a risk of electrocution. If the device falls into water, unplug it immediately. Do not reach into the water.
- ⚠ Do not drop from heights. If the device falls and has visible signs of damage do not use.
- ⚠ Do not rework, dismantle or attempt to repair any device.
- ⚠ Unplug device immediately after using.
- ⚠ Wait until device has completely cooled prior to packing it away.
- ⚠ Do not leave unattended when device is plugged in.
- ⚠ Use device only for its intended use as described in this manual. Do not use attachments not recommended by the manufacturer.
- ⚠ Do not use if the cord/plug is damaged or if the device is not working properly.
- ⚠ Do not use if the cord/plug is damaged or if the device is not working properly.
- ⚠ Keep the power cord away from heated surfaces.
- ⚠ Do not wrap the cord around the styling tool or it will wear and break prematurely. Avoid jerking, bending sharply, twisting or straining the cord or plug.
- ⚠ Do not allow the heated surface to come into contact with any surface while it is hot or plugged in. Use a heat mat or holder.

MAINTENANCE, CLEANING & STORAGE:

For optimal performance, all of our professional styling tools should be cleaned regularly of hair care residue.

1. Make sure the device is turned off and cool prior to cleaning.
2. Use a light cleaner and cloth to remove any residue.
3. Put away once dry.

For more information visit www.karmahairbeauty.com


KARMA BEAUTY
I AM. I DO. I LOVE.

The core principle of the law of karma is the restoration of balance. Karma Beauty was founded on this very principle. Our hair is constantly under attack from environmental factors and styling products. These tools were designed to help counter balance all of these negative aggressors and leave you with consistently harmonious hair.

www.karmahairbeauty.com

FOR CONSUMER INFORMATION CONTACT:
cs@karmahairbeauty.com

FOLLOW US:   


KARMA BEAUTY
USAGE & WARNINGS



Hair Tools

Analog Flat Irons



1. Ensure your hair is clean and combed through.
2. Plug in the iron and turn it on using the on-off button.
3. Adjust the heat setting to the desired temperature. (If available)
4. Separate hair into a small section (2in / 5cm max) and place the section of hair firmly between the heating plates. Slide down the length of the hair from roots to tips. Repeat as necessary.
5. Allow the hair to cool before further styling.
6. When you are done turn off the iron using the on-off button and unplug.

Digital Flat Irons



1. Ensure your hair is clean and combed through.
2. Plug in the iron and turn it on using the on-off button.
3. Most digital models feature an auto-shut off feature that is programmable in 15-minute increments up to 90 minutes.
4. Adjust the heat setting to the desired temperature. The LCD screen will confirm your desired temperature. To switch between Celsius and Fahrenheit press the + and - buttons at the same time.
5. Separate hair into a small section (2in / 5cm max) and place the section of hair firmly between the heating plates. Slide down the length of the hair from roots to tips, keeping the hair taut. Repeat as necessary.
6. Allow the hair to cool before further styling.
7. When you are done turn off the iron using the on-off button and unplug it.

Straightening Brushes



1. Ensure your hair is clean and combed through.
2. Plug in the brush and turn it on using the on-off button. **NOTE:** The Ionic Balancing Brush features an automatic shut off after 30 minutes.
3. Adjust the heat setting to the desired temperature. To switch between Celsius and Fahrenheit press the + and - buttons at the same time.
4. Separate hair into a small section (2in / 5cm max) and slide brush down the length of the hair from roots to tips. Repeat as necessary.
5. Allow the hair to cool before further styling.
6. When you are done turn off the brush using the on-off button and unplug it.

Hot Combs



1. Ensure your hair is clean and combed through.
2. Plug in the brush and adjust it to desired heat setting. Low for fine/thin hair, medium for semi-thick hair and high for thick/coarse hair. Please note that this model features an auto shut-off time of 30 minutes.
3. Separate hair into a small section (2in / 5cm max) and slide brush down the length of the hair from roots to tips. Repeat as necessary.
5. When you are done turn off the brush using the on-off button and unplug it.

Auto Waver



1. Ensure your hair is clean and combed through.
2. Plug in the waver and turn on the device.
3. We have designed our waver to have a cool tip for better grip and safety while styling. You may also use the included heat resistant glove on the hand you plan to use. Note: Using a glove is completely optional.
4. Select a strand of hair and starting just below the roots clamp down the length of the hair until you reach the ends.
5. Repeat the above process, working your way around your head.
6. When you are done turn off the device and unplug it from the socket.

Blow Dryers



1. Ensure your hair is clean and combed through.
2. Plug in the blow dryer and turn it on using the on-off button.
3. Set your desired speed and heat settings.
4. When you are done turn off the hair dryer using the on-off button and unplug it.

TIP: Use the cool shot feature to set your style.

Blow Dryer Brushes



1. Ensure your hair is clean and combed through.
2. Plug in the blow dryer brush.
3. Turn the dial on the bottom to your desired heat setting or cool blast.
4. When you are done turn off the hair dryer and unplug it.

Automatic Curler



1. Ensure your hair is clean and combed through.
2. Select barrel and attach it to the base by lining up the holes and pushing down.
3. Plug in the curler and turn it on by holding the power button for 3 seconds. Then press the "HOME" button to bring the barrel to its starting position.
4. Adjust the heat setting to your desired temperature by using the + and - buttons.
5. Starting from the back and working your way towards the front, separate a strand of hair that is no wider than 1in. (Strands that are too wide will layer up and won't be affected by the heat of the wand, causing limp, saggy curls.)
6. Place the end of the hair into the clip and apply a little tension to the hair then press either the right or left arrow button to rotate the barrel in the desired curl direction.
7. Hold the hair on the curler for about 5-7 seconds then gently release the hair and hold the curl in your hand for a moment to cool. This will help set the curl so it lasts longer.
8. Repeat until you have curled all of your hair.
9. When you are done turn off the device and unplug it.

Styling Tips



We do not recommend using heated styling tools on soaking wet hair. Water amplifies heat and could cause damage to your hair. You should also use a heat protectant prior to styling to help protect your hair.



When sectioning your hair for straightening or curling remember to keep the sections smaller, no larger than 2 inches, or you won't penetrate all of the hair.



When sectioning your hair for straightening or curling remember to keep the sections smaller, no larger than 2 inches, or you won't penetrate all of the hair. Also, make sure that your tool is completely heated up so that you get the best finish possible.



Make sure to pull the heated styling tool slowly through the hair so that you will not have to make multiple passes. It will also help ensure a smoother finish.



When using a curling wand, hold it vertical with the smallest end pointing down. You will get different results depending on the direction that you curl the hair. Curling everything in the same direction will cause the hair to flow together, giving you big, polished curls. But, alternating the direction will give a more tousled look.



When using a curling wand or a flat iron to make curls, hold the curl in your hand and allow it to cool a little before letting them fall. This will help them set better. You can also pin them up with bobby pins and spray them lightly with hairspray.



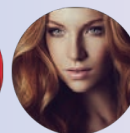
Let your hair air dry slightly before blow-drying. This will help protect your hair. Also, when blow drying, start at the back and work your way forward.

WHAT'S THE RIGHT TEMPERATURE?

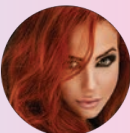
230°C/450°F
Thick, Curly & Wavy



190°C/370°F
Normal or Slightly Curly



150°C/300°F
Fine or Damaged



210°C/410°F
Slightly Curly / Wavy

170°C/340°F
Dry or Medium Thick