

Note:

1. The drum grater set is good for using on root vegetables and other foods.
2. The locking base knob ❶ must be released to allow you to attach or remove the suction base ❿.
3. The drum grater contains sharp blades, please use extreme caution when handling. Always use the pusher to be safe.
4. Never put your fingers into the feeding jar.
5. Keep out of reach of children.

With proper use and care, your new grater set should give you many great cooking experiences.

LIMITED 2-YEAR WARRANTY

This is the only express warranty for this product. Hudson Home Group, LLC., warrants this product to be free from defects in material and workmanship for single-family household use for two years from the date of original purchase. Ordinary wear and tear including damage to the blade surface is excluded. Use of product for anything other than its intended purpose is also not warranted. We exclude liability for all consequential damages. Your exclusive remedy is repair or replacement of the nonconforming product, at our option. All liability is limited to purchase price. **All other warranties, including any statutory warranty or condition of merchantability or fitness for a particular purpose, are disclaimed.** You may have legal rights that vary depending on where you live. For repair or replacement, please call with information on your product's proof of purchase and description of the problem.

Hudson Home Group LLC, Boonton, NJ 07005
Call center : 1(855)351-8261



CARE & USE
DRUM GRATER SET





DRUM GRATER SET

Dear Consumer,
Congratulations on your decision to purchase our high quality drum grater set. With proper care, this easy to use and clean drum grater set should give you many years of use.

Please take a moment to read the use and care instructions that follow. Should you have any questions, please feel free to contact our consumer care department at info@hhgllc.com

When you take it out of the package

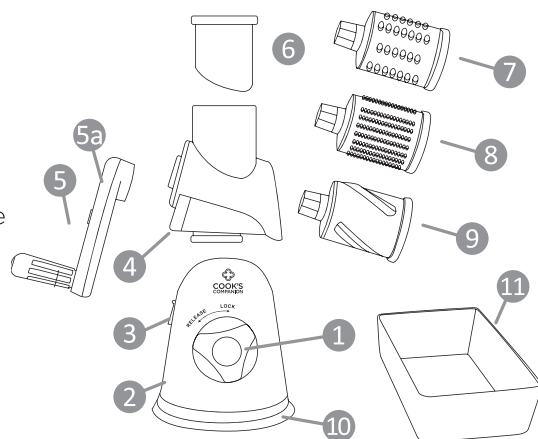
- Wash in warm soapy water before first use.
- Dispose of packing materials in an environmentally friendly way.

Use and Care for your drum grater Set

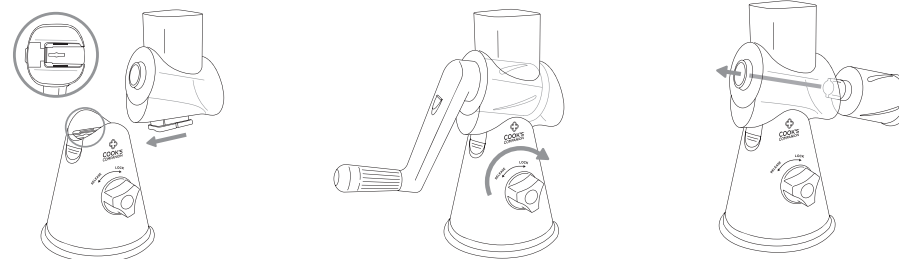
- Make sure you clean your drum grater as soon as possible after use. To clean the drum grater, disassemble all components. Food particles that linger on your drum grater may congeal and become harder to remove over time.
- Put the base on a dry, smooth, non-porous surface., Lock it into place by turning the knob clockwise. Make sure the suction base is clean before trying to attach as it may become difficult to seal in place once the bottom of the base has particles on it/is dirty.
- The drum grater set is NOT dishwasher safe. Please hand wash only.
- Wash with a non-abrasive sponge and detergent.
- Dry drum grater thoroughly with a soft cloth.
- Do not immerse the base in water.
- Make sure that your drum grater set is clean and dry before storage.

The parts of drum grater set

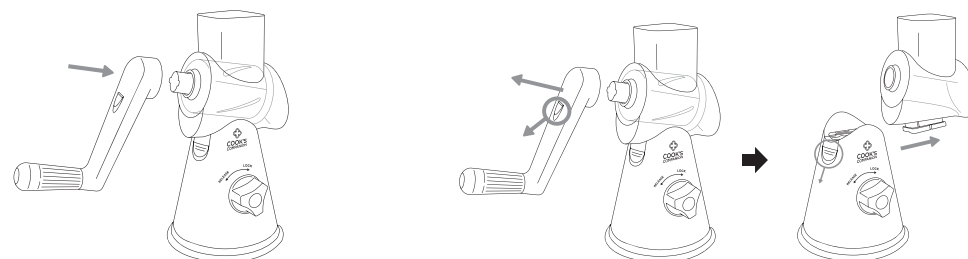
- ① Knob for suction base
- ② Base
- ③ Release button
- ④ Feeding jar
- ⑤ Handle ⑤a Release button on handle
- ⑥ Pusher
- ⑦ Coarse Shredder
- ⑧ Fine Shredder
- ⑨ Slicer
- ⑩ Suction pad
- ⑪ Container



Assembly Instructions



1. Follow the direction of arrow, and place the feeding jar ④ on the base ②.
2. Put the base on a dry, smooth, non-porous surface. Lock it into place by turning the knob ① clockwise.
3. Insert the coarse shredder, fine shredder, or slicer into the feeding jar ② until it comes through the opening on the other side.



4. Aim at the cross, pressing down the button on handle ⑤a, then lock it in place.
5. Pressing down the release button ③ to release the feeding jar.

When it's time use your drum grater set

1. Function:

Coarse shredder ⑦ : grates or shreds foods and vegetables into coarse pieces.

Fine shredder ⑧ : grates or shreds foods and vegetables into fine pieces.

Slicer ⑨ : slices foods and vegetables.

2. If size of the food is too big to fit into the feeding jar, cut the food into small pieces first.
3. Put the container ⑪ in front of the drum grater to catch the food when it comes out of the grater after grinding and slicing.
4. Insert food into the feeding jar ④ and turn the handle ⑤ for grinding and slicing the food.
5. Use the safety pusher ⑥ to keep food in place while grinding/slicing and always keep fingers away from the blade.

