



**MEDIC
THERAPEUTICS**

DOUBLE-BARREL TOTAL BODY MASSAGER



User Manual

PRODUCT OVERVIEW

Indicator light

Charging port
Type-c cable

Power 
Massage on/off



Detachable straps*2



Charger



Type-C Cable

IMPORTANT SAFETY INSTRUCTIONS

When using electrical products, especially when children are present, basic safety precautions should always be followed, including the following:

Read all instructions before using.

DANGER - TO REDUCE THE RISK OF ELECTRIC SHOCK:

- ALWAYS unplug this product from the electrical outlet immediately after using and before cleaning.
- DO NOT reach for a product that has fallen into water. Unplug it immediately.
- DO NOT use while bathing or in the shower.
- DO NOT place or store product where it can fall or be pulled into a tub or sink.
- DO NOT place in or drop into water or other liquid.
- NEVER use pins or other metallic fasteners with this product.

WARNING - TO REDUCE THE RISK OF BURNS, ELECTRIC SHOCK, FIRE, OR INJURY TO PERSONS:

- The product should NEVER be left unattended when plugged in. Unplug from outlet when not in use, and before putting on or taking off parts or attachments.
- Close supervision is necessary when this product is used by, on, or near children or disabled persons.
- This product is NOT for children.
- Use this product only for its intended use as described in this manual. DO NOT use attachments not recommended; specifically, any attachments not provided with the unit.
- NEVER operate this product if it has a damaged cord or plug, if it is not working properly, if it has been dropped or damaged, or dropped into water. Return the product to a Service Center for examination and repair.

- Keep the cord away from heated surfaces.
- NEVER drop or insert any object into any opening.
- DO NOT operate where aerosol products are being used or where oxygen is being administered.
- DO NOT operate under a blanket or pillow. Excessive heating can occur and cause fire, electric shock, or injury to persons.
- DO NOT carry this product by the supply cord or use cord as a handle.
- To disconnect, turn all controls to the off position, then remove plug from outlet.
- DO NOT use outdoors.
- NEVER operate the product with the air openings blocked. Keep the air openings free of lint, hair, and the like.
- DO NOT use over sensitive skin areas or in the presence of poor circulation.
- NEVER operate on a soft surface such as a bed or couch where the air openings may be blocked. Recharge only with the charger provided with the unit. A charger that is suitable for a specific type of battery pack may create a risk of fire when used with another battery pack.
- DO NOT expose a battery pack or product to fire or excessive temperature. Exposure to fire or temperature above 265°F may cause explosion.
- Follow all charging instructions and do not charge the battery pack or product outside of the temperature range specified in the instructions. Charging improperly or at temperatures outside of the specified range may damage the battery and increase the risk of fire. Product operating and charging range: 0°F - 104°F (0°C - 40°C).

SAVE THESE INSTRUCTIONS

CAUTION - PLEASE READ ALL INSTRUCTIONS CAREFULLY BEFORE OPERATING

- Consult your doctor prior to using this product if:
 - You are pregnant
 - You have a pacemaker
 - You have any concerns regarding your health
- NOT recommended for use by diabetics.
- NEVER leave the product unattended, especially if children are present.
- NEVER cover the product when it is in operation.
- DO NOT use this product for more than 15 minutes at a time.
- Extensive use could lead to the product's excessive heating and shorter life. Should this occur, discontinue use and allow the unit to cool before operating.
- NEVER use this product directly on swollen or inflamed areas or skin eruptions. DO NOT use this product as a substitute for medical attention.
- NEVER use this product while in bed.
- This product should NEVER be used by any individual suffering from any physical ailment that would limit the user's capacity to operate the controls or who has sensory deficiencies. NEVER use this product while driving an automobile.
- This product is designed for household use only.

CAUTION: To avoid pinching, do not lean on the massage mechanism when adjusting your body position. Do not jam or force any part of your body into the moving massage mechanism.

NOTE: Only gentle force should be exerted against the unit in order to eliminate risk of injury.

HOW TO USE



Figure 1

1. Your unit should arrive fully charged. When you need to charge the unit, plug the adapter into the jack on the unit, and plug the other end into a 120-volt outlet. The power button will illuminate red when charging and will change to green once fully charged. The unit should be charged after an approximate 2 hours of charge time. A full charge will last up to 1 hour if being used in high speed mode.



Figure 2

2. This massager is versatile and can be used for neck, shoulder, back, legs, arms and feet (Fig. 1-3). For use on neck, shoulders, or back, attach the adjustable straps to the ends of the unit (Fig.4), use the straps to hold the massager in the desired area. The Double-Barrel Total Body Massager design allows the massager to roll up and down your body, relaxing muscles and helping to alleviate pain as it rolls.



Figure 3



Figure 4

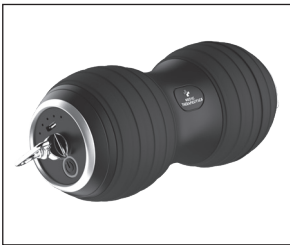


Figure 5

3. To activate the massage action, press and hold the power button (Fig. 5). The massager has 5 speed levels.

- Press One time – Low Speed
- Press Two times – Faster than Low Speed
- Press Three times – Medium Speed
- Press Four times –Faster than medium speed
- Press Five times – High Speed
- To turn the unit off, press and hold until the power shuts off.

4. When not in use, store your Cordless Double-Barrel Total Body Massager in its convenient carrying case.

FCC STATEMENT

This device complies with Part 15 of the FCC Rules. Operation is subject to the following two conditions: (1) this device may not cause harmful interference, and (2) this device must accept any interference received, including interference that may cause undesired operation.

NOTE: not responsible for any radio or TV interference caused by unauthorized modifications to this equipment. Such modifications could void the user authority to operate the equipment.

NOTE: This equipment has been tested and found to comply with the limits for a Class B digital device, pursuant to Part 15 of the FCC Rules. These limits are designed to provide reasonable protection against harmful interference in a residential installation. This equipment generates, uses, and can radiate radio frequency energy and, if not installed and used in accordance with the instructions, may cause harmful interference to radio communications. However, there is no guarantee that interference will not occur in a particular installation. If this equipment does cause harmful interference to radio or television reception, which can be determined by turning the equipment off and on, the user is encouraged to try to correct the interference by one or more of the following measures:

- Reorient or relocate the receiving antenna.
- Increase the separation between the equipment and receiver.
- Connect the equipment into an outlet on a circuit different from that to which the receiver is connected.
- Consult the dealer or an experienced radio/TV technician for help.

LIMITED LIFETIME WARRANTY

Your Medic Therapeutics product is backed by a limited lifetime manufacturer's warranty. Medic Therapeutics will repair or replace your device at any time should it fail due to a defect in material or workmanship, subject to the certain limitations.

This limited warranty does not cover any damage that results from unauthorized or improper use, service, or repair. Further, it does not cover damage caused by accident, impact, negligence, or normal wear and tear. Should you discover your Medic Therapeutics product is not functioning properly, please send your device to our repair center for evaluation. If your product cannot be repaired or serviced, we will reserve the right to change it for a similar or newer model.

Please note that a flat rate of \$20.00 will be charged to cover a service evaluation fee and return shipping of your device. All warranty claims must be accompanied by a copy of your proof of purchase from an authorized retailer. Please send your device, proof of purchase, and a check or money order in the amount of \$20.00 made out to Medic Therapeutics to:

Address:

Medic Therapeutics Service Center
3069 Taft Street
Hollywood, FL 33021

Contact:

warranty@medictherapeutics.com



**MEDIC
THERAPEUTICS**